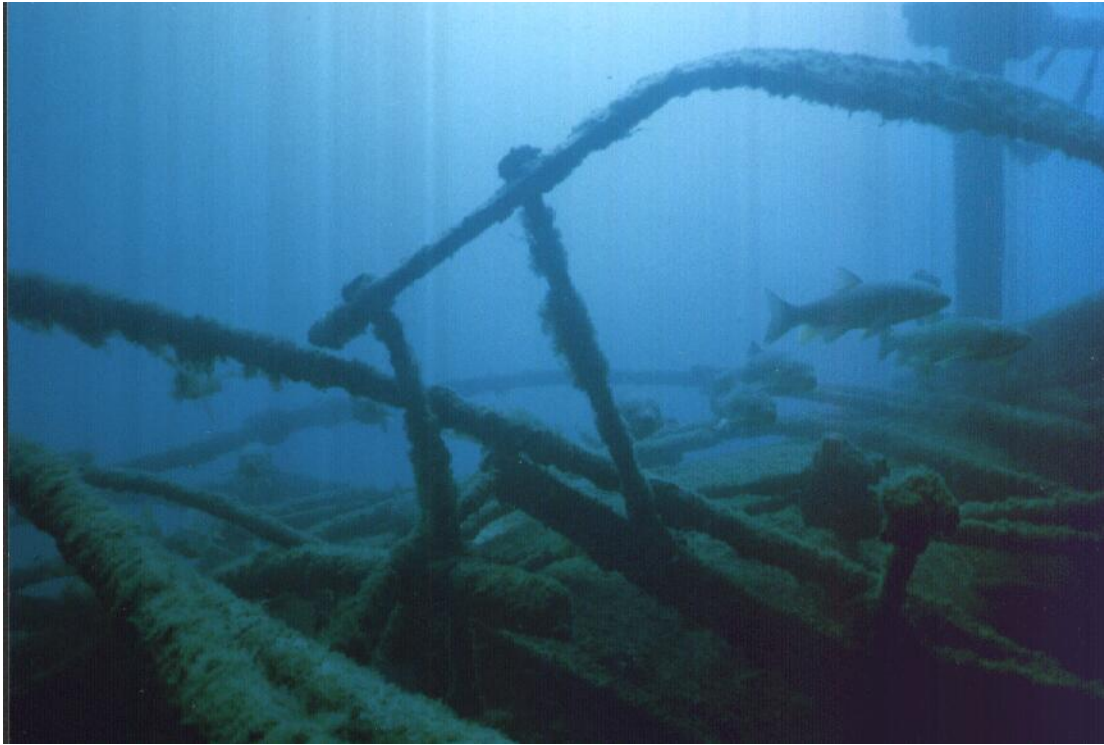


Jerry's Shipwreck Program



If finding and researching lost shipwrecks interests you- keep reading. This new program includes side scan surveying, diving on new sites and recording results for future divers to explore and enjoy.

- Includes actual side scanning search grids
- Analyzing scan files and mapping
- Diving and making beginning site maps
- Theory of side scan and reviewing files
- Program includes 4 hours of scanning and 4 dives
- PADI Wreck Diving Certification
- Cost: \$300.00